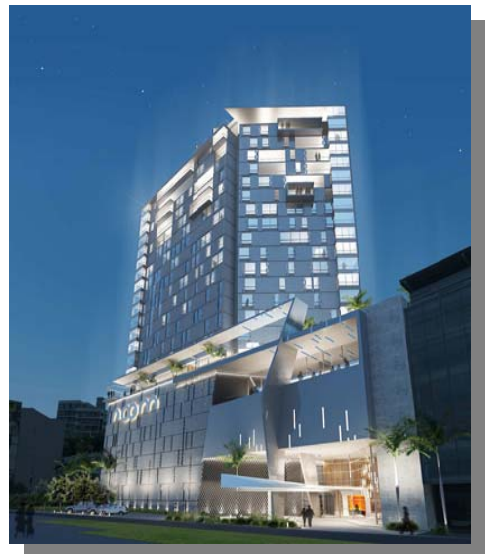


## COMPANY DOSSIER



## PROLOGUE

**2πR Ingenieros 1, S.L.P.** is a company specializing in engineering and its diverse applications, established for 20 years, and with a wide experience.

We are based in Barcelona and have representatives in Mallorca, Menorca and Fuerteventura.

## 1.- INTRODUCTION

We conduct large multidisciplinary projects, lending our experience and knowledge towards the realization of projects and the overseeing of on-site work.



B-60.986.924

## 2.- PERSONNEL

The team in charge of implementing the projects comprises persons of renowned experience and ability. The choice of personnel is tailored to the requirements of each individual project.


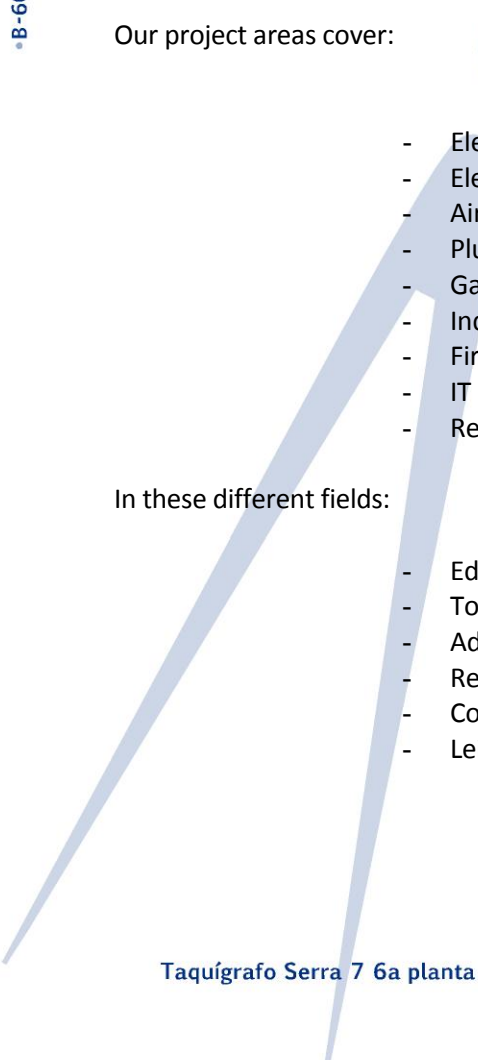
The Project Manager is responsible for all areas of production and is in direct contact with the client. His main duties include:

- Providing regular reports to the client
- Conducting regular consultations in order to ensure the requirements of the client are met exactly
- Supervision of work done by the rest of the team
- Ensuring deadlines are met
- Control of budget

We rely on the expertise of specialized external consultants for some parts of our projects, such as acoustics, landscaping and others.

## 3.- WORK AREAS

Our project areas cover:

- 
- A light blue circle.
- 
- A large, light blue diagonal line that starts from the bottom left and extends towards the top right, passing behind the list of work areas.
- Electricity (high and low voltage)
  - Electricity networks (medium voltage)
  - Air conditioning
  - Plumbing
  - Gas
  - Industrial refrigeration
  - Fire protection installation
  - IT
  - Renewable energy: solar, biomass, etc...

In these different fields:

- Education
- Tourism
- Administrative
- Residential
- Commercial
- Leisure

We also provide the services of:

- On-site management
- Civil engineering
- Viability assessment
- Energy efficiency
- Environment projects
- Urban planning
- Health and safety

#### 4.- HUMAN RESOURCES

Our team composes of:

##### Technical:

- 20 engineers
- 4 Architect
- 1 Computer Technician

##### Administrative:

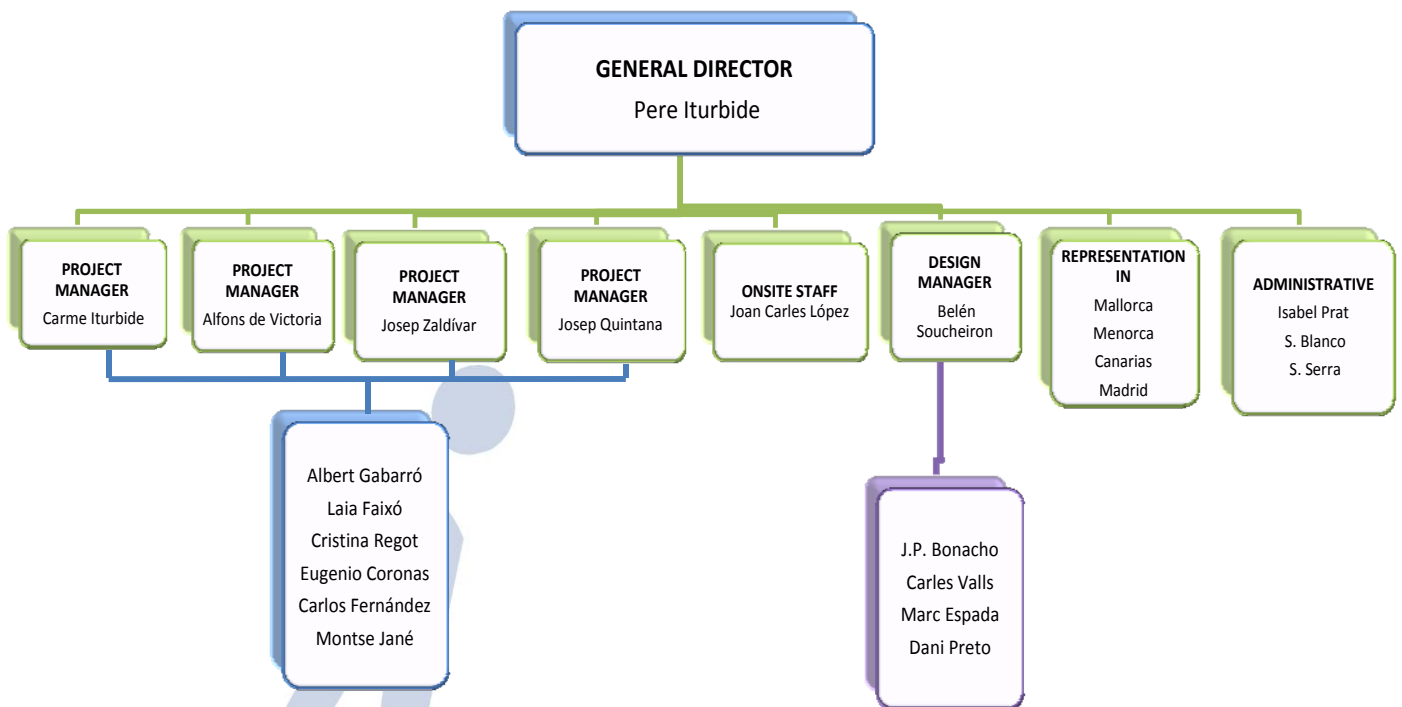
- 1 Accountant
- 1 Financial advisor

##### General:

- 1 Design Manager
- 3 Designers
- 1 Secretary
- 1 Assistant accountant

## ORGANIZATION

B-60.986.924



## SOFTWARE AND TECHNOLOGY

Our IT technology includes:

- Digital Archiving
- High speed Ethernet cabled network
  - Windows Server 2003
  - 25 working stations with Intel Pentium and 17" and 19" monitors, Windows XP, Office 2003, Presto 10.04 and Autocad v2010
  - Continuous Data Protection
- HP Designjet 1050 and HP Designjet T1100ps printers
- A3 printers: HP Business Inkjet and OKI
- A4 Inkjet and laser printers
- 1 Photocopier
- Fax machines
- Measurement instruments
- Scanner

B-60.986.924

PROJECTS

B-60.986.924

## HOTELS

B-60.986.924





Fenicia Prestige 5\*\*\*\*\* is situated in the village of Santa Eulalia, close to the beach and Santa Eulalia river.

The construction of the hotel was funded by GEAMSA, a company with a long track record in this field, and run by INSOTEL since it opened.

Main features:

- 179 rooms
- 18,550 m<sup>2</sup>
- 4 restaurants
- 2 bars
- 2 outdoor pools
- Thalasso SPA
- Conference suites

We developed the project from January 2002 until September 2003 (20 months). Subsequently, from October 2004 to May 2006 we supervised the on-site work. We completed our collaboration by arranging the necessary permissions.



This luxury Hotel, Lifestyle&Spa, situated in Santa Eulalia (Ibiza) was funded by BELLAVEAU S.L. and run by AGUAS DE IBIZA.

Main features of Hotel Aguas de Ibiza\*\*\*\*\*:

- 114 rooms
- 13,328 m<sup>2</sup>
- 1 fine dining restaurant
- Chillout
- Lounge Bar
- 2 outdoor pools
- SPA
- Business Center

We started our collaboration in June 2006, realizing the installation projects: electricity, air conditioning, plumbing, fire protection and IT.

We were also responsible for the on-site works, while the construction works took place: from October 2006 until August 2008.



Over a privileged location in Port de Sóller, Mallorca, this brand-new hotel that will open its doors in June 2011, will be the first hotel in Mallorca to achieve GOLD LEED certification.

Funded by WEST INVEST DEKA IMMOBILIEN, will be operated by the prestigious Jumeirah Group. The hotel is 5\*\*\*\*\* (7 star hotel).

In construction since October 2009, when work is complete it will have:

- 120 rooms
- 22,661 m<sup>2</sup>
- 2 restaurants
- 2 outdoor pools
- SPA
- Conference Suites

All the installations have been designed considering the LEED GOLD certification. For this reason, environment and sustainable building have been our main considerations during the process of design.



LEED 2009 FOR NEW CONSTRUCTION AND MAJOR RENOVATION





This exclusive resort comprises a Boutique Hotel, a Beach Club, SPA, Golf Club and Residences, and is situated in Playa del Carmen, Cancún (México).

It has been funded by TANIT S.A., one of the companies belonging to INSOTEL tourism group, and who will run the hotel.

The Condominiums will have:

- 220 residences
- individual private pools
- 24hr close circuit TV
- kitchens of renowned brand
- extensive gardens
- private Gymnasium
- private car park

About the Boutique Hotel 5\*\*\*\*\* (7 star hotel):

- 16 suites
- private jacuzzi
- designed by CUSTO BARCELONA©
- beach club access



This plot of 165,000 m<sup>2</sup> located close to RTH4, will become a Luxury Hotel with:

- 285 Suite Rooms
- 400 Secret Rooms
- 440 Dream Rooms

The project started in January 2007 but was put off because of the financial crisis. We are supposed to start up the construction during 2013.



Right in the heart of Barcelona, in Les Corts neighbourhood and next to L'Illa Diagonal, you will find this elegant hotel run by NH Touristic Group.

#### Main features:

- 304 rooms
- Nhube Restaurant by Ferran Adrià
- buffet Restaurant
- 2 bars
- 1 outdoor pool
- SPA
- conference suites

We collaborated on the project for a year and a half, developing all the installations: electricity, air conditioning, plumbing, fire protection, IT. We were also the managers for the on-site works.

This hotel started operating year 2007.





After a complete rehab, Hotel Cala Serena opened its doors again in July 2003, right in the coastal village of Cala D'Or.

Within its facilities:

- 280 Rooms
- 3 Restaurants
- theater
- discotheque
- Bars
- 2 outdoor pools
- 1 heated pool
- Wellfit-SPA
- business Center
- tennis Courts
- driving Range

This emblematic project took place between 2001 and 2003.

Cala Serena Hotel has been a leader in environmental policies, achieving a prize from Mallorca's Council in 2005 as the most ecological company on the island. It has also been certified by ISO 14001 and since 2007 by EMAS (Eco-Management and Audit Scheme). Besides, has been chosen "Tui Environmental Champion" for three consecutive years and it was declared second best hotel at international level from 1000 participants and the best in Spain.





This Robinson hotel is located in Fuerteventura with privileged views in front of the sea.

After the refurbishment in 2004 of 36 rooms in the Patio building, last year we completed a full refurbishment of 181 further rooms in the Pueblo area. Our collaboration has involved projects and onsite management of:

- Electricity
- Plumbing
- Air conditioning and ventilation
- Solar panels
- Fire protection

We also renewed the existing central cooling and heating system with a pellet boiler and a water condensed chiller.

Once again we found a solution providing energy efficiency, saving and comfort.

Working in 8 hotels in West Africa for the INAUGURE Hotel chain:

- Hotel in Abidján (Costa de Marfil)
- Hotel in Cotonou (Nigeria)
- Hotel in Kinshasa (RD Congo)
- Hotel in Niamey (Níger)
- Hotel in Douala (Camerún)
- Hotel in Brazzaville (Congo)
- Hotel in Conakry (Guinea)
- Hotel in Pointe Noire (Republic of Congo)





This Hotel will be situated in Abidjan, **the economic and former official capital of Ivory Coast**

Main features:

- 23 levels high
- 26.000 m<sup>2</sup>
- 179 rooms :
 

classical	134
disabled	2
executive	16
Junior suite	8
executive	18
prestige	1
- 28 apartments
- 1 restaurants and 1 banquet hall
- 3 bars: 1 ppal, 1 Snack bar & 1 Panoramic
- 6 Conference Rooms
- Pool and Children's pool (in 17th floor)
- Fitness and SPA
- 4 parking levels





This Hotel will be situated in Cotonou, the largest city and economic capital of Benin. Cotonou is located between the Atlantic Ocean and Lake Nokoué

### Main features:

- 5 levels high
- 7.000 m<sup>2</sup>
- 120 rooms :
  - classical 98
  - disabled 2
  - executive 14
  - Junior suite 4
  - executive 1
  - prestige 1
- 1 restaurant
- 2 bars
- 4 Conference Rooms
- Pool
- Fitness
- Parking



B-60.986.924

This Hotel will be situated in Kinshasa, the capital and the largest city of the Democratic Republic of the Congo and it is located on the Congo River.

Main features:

- 4 levels high
- 7.400 m<sup>2</sup>
- 159 rooms :
 

classical	134
disabled	2
executive	15
Junior suite	4
executive	3
prestige	1
- 1 restaurant
- 2 bars
- 4 Conference Rooms
- 1 Pool on the river
- Fitness
- Parking



This Hotel will be situated in Niamey, the capital and largest city of Niger.

### Main features:

- 7.800 m<sup>2</sup>
- 140 rooms :
  - classical 121
  - disabled 2
  - executive 10
  - Junior suite 4
  - executive 2
  - prestige 1
- 1 restaurant
- 2 bars
- 4 Conference Rooms
- Pool
- Fitness
- Parking



This Hotel will be situated in the centre of Douala, the largest and most commercial city in Cameroon and the capital of Cameroon's Littoral Region



### Main features:

- 9.200 m<sup>2</sup>
- 185 rooms :
  - classical 156
  - disabled 2
  - executive 18
  - Junior suite 5
  - executive 3
  - prestige 1
- 1 restaurant
- 2 bars
- 4 Conference Rooms
- Pool
- Fitness
- Parking



B-60.986.924

This Hotel will be a Complex marina fluvial and will be situated in Brazzaville, the capital and largest city of the Republic of the Congo and is located on the Congo River.

### Main features:

- 7.400 m<sup>2</sup>
- 150 rooms :
 

classical	127
disabled	2
executive	12
Junior suite	4
executive	4
prestige	1
- 1 restaurant
- 2 bars
- 5 Conference Rooms
- Pool
- Fitness
- Parking





B-60.986.924

This Hotel will be situated in Conakry, the capital of Guinea : with a total of 186 guest rooms. It is currently under construction and is scheduled for opening in late 2014



This is a new hotel building, to be located in POINTE NOIRE, Republic of Congo in Africa, consisting of 5 room floors, (2nd, 3rd, 4th, 5th, 6th), with a total of 142 guest rooms and a total of 300 people and public areas on the ground and first floor.

### ROBINSON HOTELES

- Hotel Robinson Club Esquinzo (Canarias)

### PROTURSA GROUP

Mallorca:

- Apartamentos Turísticos Donaire - 237 Ap.
- Apartamentos Sa Coma Playa - 181 Ap.
- Hotel Sa Coma Playa - 326 rooms
- Palmeras Playa - 300 rooms
- Playa Dorada - 180 rooms
- Safari Park - 618 rooms
- Vista Badia - 250 rooms
- Turó Pins - 230 rooms
- Floriana Park - 240 rooms
- Son Floriana - 260 rooms

### INSOTEL

- Hotel Cala Mandia - 545 rooms (Mallorca)
- Hotel Cala Ratjada - 250 rooms (Mallorca)
- Hotel Formentera Playa - 250 rooms (Formentera)
- Hotel Punta Prima - 545 rooms (Menorca)
- Hotel Tarida Beach 407 rooms (Eivissa)
- Hotel Tarida Playa 115 rooms (Eivissa)

### HNAS. SERVERA

- Hotel Biniamar (Mallorca)

### SABINA GROUP

- Hotel Sabina - 130 rooms (Mallorca)
- Hotel Osiris - 207 rooms (Mallorca)

#### **PALMERAS PLAYA**

- Hotel Bonaire - 237 rooms (Mallorca)

#### **INTURLEMA**

- Hotel Alondra - 160 rooms (Mallorca)

#### **MIGJORN DE CALA MILLOR**

- Hotel Alicia - 175 rooms (Mallorca)

#### **FAGACA**

- Hotel Garbí - 108 rooms (Mallorca)

#### **PLAZAPAIN**

- Hotel Atlantis Bahía Real - 239 rooms + 12 suites (Fuerteventura)

#### **RURAL**

- S'Era de Pula (Mallorca)
- Son Gener (Mallorca)
- Son Draguet (Mallorca)
- Son Mas de Sa Marina (Mallorca)
- Santa Eularieta (Menorca)
- Planoles (Girona)
- Xalet del Golf (Puigcerdà – Girona)

## WATER PARKS

B-60.986.924





Waterworld is located in Lloret de Mar and is a large aquatic park occupying an area of 92.629 m<sup>2</sup>.

A constant renewal of its attractions has made this park one of the most modern in Europe, designed for adults and children, in the purest concept of a water park.

Among its installations, the most recent attractions are:

- X-treme Mountain
- Water Mountain
- Rafting River
- Water giant
- Storm

And much more such as bars, restaurants, mini-golf, solarium, a medical facility, private parking, etc...



*Rafting River & Water Mountain*



*Water pistas & Relax Lake*



*Kiddie Island & Family Lagoon*





AQUADIVER is located in Platja d'Aro, and is a large park occupying 100.000 m2.

Its attractions have highlighted this park as one of the most moderns in Europe, designed for both, adults and kids.



Main attractions are:

- Waves pool
- Water Fall
- Splash Mountain
- Soft chutes
- ZIG ZAG
- Kamikazes
- Adventures lake
- Spirotub
- Rock House
- Baby Pool
- Minitous
- Mini Zig-Zag
- Hydrotherapy pools
- Pineda Park

And more, apart from the facilities: bars, restaurants, mini-golf, solarium, private parking, etc...



*Aquamania*



*Pirate Maze*



*Espirotub*

This park in Vilassar de Mar contains several areas dedicated to various purposes such as picnic areas, supermarket, stages, chill-out zone, minigolf, etc...

Its main attractions are:

- Aquamania
- Bitour
- Espiral
- Espirotub
- Garden of Delights
- Kamikazes
- Pirate Maze
- Lake

- Masia
- Megatours
- Minitours
- Waves pool
- Restaurants
- Savage river
- Water chutes
- Zig-Zags

B-60.986.924

RESIDENTIAL

B-60.986.924

## SANTA PERPÈTUA DE MOGODA

- FASE I: 128 units
- FASE II: 133 units
- FASE III: 76 units
- FASE IV: 109 units
- FASE VI: 165 units

## VILADECANS

- FASE I: 220 units
- FASE II: 93 units
- FASE III: 105 units

## MOLLET DEL VALLÈS

## MATARÓ

- 106 units

## ESPLUGUES DE LLOBREGAT

- 110 units



## SANT CUGAT DEL VALLÈS

- FASE I: 77 units
- FASE II: 158 units
- FASE III: 125 units

## SARRIÀ PARK, BARCELONA

- FASE I: 171 units
- FASE II: 77 units
- FASE III: 48 units

## CASTELLARNAU

- FASE I: 221 units
- FASE II: 159 units
- FASE III: 146 units
- FASE IV: 85 units



## VALLEHERMOSO, S.A.

- PASEO DE GRACIA, Barcelona  
Apartments, shops and car parks.

## MAPFRE INMUEBLES S.A.

- SANT JOSEP DE SA TALAIA, EIVISSA: 47 units
- TARRAGONA, FASE I: 98 units
- TARRAGONA, FASE II: 112 units

## RIBAS ARQUITECTOS

- ALTEA, ALICANTE FASE I: 164 units
- ALTEA, ALICANTE FASE II: 108 units
- FONT ROMEU, FRANCIA: 64 units
- GRAN VIA, BARCELONA: 41 units



B-60.986.924

ADMINISTRATIVE



•B-60.986.924



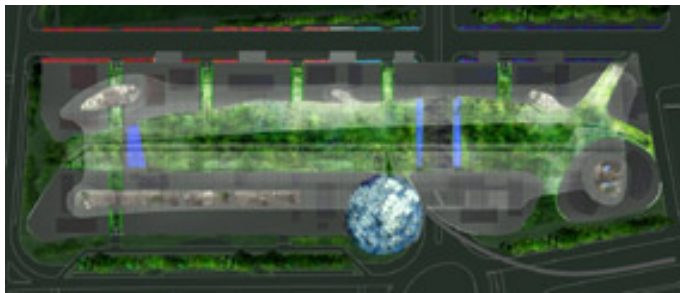
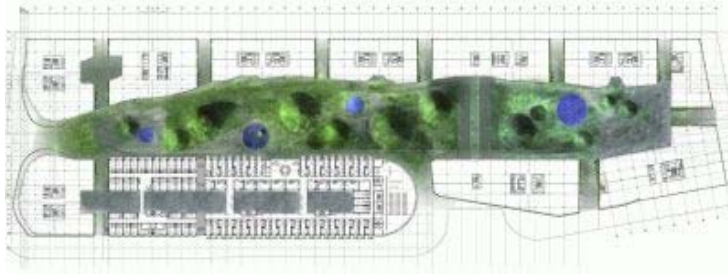
1999    Millenium Building (Sabadell) with a surface of 20,183 m<sup>2</sup>



2000 Torres Sarrià (Barcelona) with a surface of 16,400 m<sup>2</sup>

**Finalist FAD 2004**

CITY METROPOLITANA, HOSPITALET DE LLOBREGAT



**City Metropolitana** (L'Hospitalet del Llobregat) with a surface of 236,000 m<sup>2</sup>  
**ARCHITECT: JEAN NOUVEL**

### SACRESA

- 2000 Main offices building with a surface of 2.410 m<sup>2</sup>

### AUTORIDAD PORTUARIA DE BARCELONA

- 1998 Headquarters building with a surface of 524,25 m<sup>2</sup>
- 1997 ASTA building with a surface of 2.000 m<sup>2</sup>

### GRUPO Z

- 1999 Headquarters building with a surface of 2.267 m<sup>2</sup>

### ACOMO

- 2000 Polígono CAN MAGÍ, Sant Cugat del Vallès



Offices building	2.989 m <sup>2</sup>
Industrial buildings	5.515 m <sup>2</sup>
Parking	3.377 m <sup>2</sup>

### MARÍTIMA INTERNACIONAL

- 2001 Offices in Barcelona

### MADESA

- 2000 Offices in Barcelona

### TORRAS PAPEL

- 2002 Offices in Barcelona

### D.G. PORTS BALEARS

- 2005 Offices in Palma de Mallorca



#### **ASOCIACIÓN NUCLEAR ASCÓ – VANDELLÓS**

- 2005 Headquarters building

#### **BANK OFFICES**

- **LA CAIXA**

Ciutadella- Menorca.

Weyler Square- Palma Mallorca.

- **B.B.V.A -Reus**

- **CAIXA PENEDES - Manresa**

- **CAIXA PENEDES – Lleida**

COMMERCIAL AND RESTAURANTS

B-60.986.924



Extension of emblematic shopping center ILLA DIAGONAL.

The extension of the gallery, which opened a link between the existing centre and Deu i Mata street, was included in the construction of the project of NH Constança hotel.

## PREMISES IN MADRID AIRPORT

- 2013 STARBUCKS: 575 m<sup>2</sup>
- 2013 MÁS QUE MENOS: 576 m<sup>2</sup>
- 2013 CAFFRICCIO : 624 m<sup>2</sup>
- 2013 PEPITO GRILLO: 640,25 m<sup>2</sup>
- 2013 LA BELLOTA: 320,42 m<sup>2</sup>
- 2013 MAHOU MADRID MOLA: 629 m<sup>2</sup>
- 2013 WORLD'S FOOD: 396 m<sup>2</sup>
- 2013 EATING POINT: 525 m<sup>2</sup>
- 2013 PAUL: 310 m<sup>2</sup>
- 2013 RODILLA: 222 m<sup>2</sup>
- 2013 BAZAAR RESTAURANTE: 825,60 m<sup>2</sup>
- 2013 ESPRESSION LAVAZZA: 300 m<sup>2</sup>



Starbucks



Rodilla





Caffriccio



Más que Menos



Kirei by Kabuki





La Bellota



Eating Point



World's Food



### PREMISES IN PALMA DE MALLORCA AIRPORT

- 2007 NATURAL BREAK: 427 m<sup>2</sup>
- 2007 FOOD COURT: 1.800 m<sup>2</sup>
- 2009 FARGGI: 326 m<sup>2</sup>
- 2011 WARSTEINER: 867 m<sup>2</sup>
- 2012 CARLING: 221 m<sup>2</sup>



## PREMISES IN ASTURIAS AIRPORT

- CAFRICCIO: 348 m<sup>2</sup>
- LA PAUSA: 232 m<sup>2</sup>
- EUROPA: 55 m<sup>2</sup>
- MEAL O'CLOCK: 35 m<sup>2</sup>



*Restaurant La Pausa*



*Self-service Cafriccio*





In front of the Courts of Justice, this Shopping Center with Hotel, residences and private offices will represent an improvement to the urban planning of the area.

5,320 m2 will be dedicated to commercial premises, restaurants, walkways and rest areas.

### **SUPERMERCADOS GIGANTE (AHORA EROSKI)**

- 9.800 m<sup>2</sup> Sa Coma, (Mallorca)

### **HIPER MANACOR**

- 2.300 m<sup>2</sup> Cala Millor, (Mallorca)

### **SUPERMERCADOS DÍA**

- 5.200 m<sup>2</sup> Store and Distribution Center. Inca, (Mallorca)
- 6 Centers in Barcelona
  - Milà i Fontanals
  - Santa Amelia
  - El Prat
  - Rosselló
  - Pacífic
  - Fabra i Puig

- 2 Centers Mallorca

### **TOYS'R US**

- 1.500 m<sup>2</sup> Shopping Center. Diagonal Mar

### **CAHISPA**

- 3.800 m<sup>2</sup> Shopping Center .Fuerteventura

### **CADENA MÜLLER**

- 1.200 m<sup>2</sup> Shopping Center . C/Colón, Palma de Mallorca
- Several Stores Mallorca

VARIOUS

B-60.986.924

### GRUPO SAS

- Hamelin School

### IESE

- Catalan Private Cultural Foundation

### CONSELLERIA EDUCACIÓ I CULTURA BALEARS

- S'Illot School , Mallorca



### Architecture Award.Mallorca 2002-2003

- Ca'n Pastilla School, Palma de Mallorca





Simulator Building                      2002    2.556 m<sup>2</sup>

Extension simulator Building            2009    1.965 m<sup>2</sup>

## TEACHING BUILDING. AVENIDA PEARSON IN BARCELONA

BUILDING A	10.678 m <sup>2</sup>
BUILDING B	6.344 m <sup>2</sup>
BUILDING 1	4.318 m <sup>2</sup>
BUILDING 2	2.790 m <sup>2</sup>
BUILDING 3	2.169 m <sup>2</sup>
BUILDING 4	1.565 m <sup>2</sup>



B-60.986.924

#### **GOVERN ILLES BALEARS**

- Academy of Police and Fire. Son Banya (Mallorca)
- Nursery in Menoca

#### **AYUNTAMIENTO SANTA PERPÈTUA DE MOGODA**

- Nursery in Sta. Perpetua de la Mogoda

#### **OSHSA**

- Heating in I.E.S. Gerbert d'Aurillac (St. Fruitós de Bagés)

#### **TECNATOM**

- Technical Training Center in Building of Nuclear Power Simulator Plant in Vandellós II and Ascó I and Ascó II.

#### **COINRE**

- Work Center for physically and mentally handicapped.

### **POLIDEPORTIVO C.B. LA SALLE**

- Sports Center C.B. La Salle (ACB Basketball) – Mahó, Menorca

### **URBANIZACIÓN BINISAFUA**

- Sports Area in residential development in Binisafua - Sant Lluís, Menorca

### **R.C. CALA SERENA**

- Sports Area in R.C. Cala Serena Hotel - Mallorca

### **URBANIZACIÓN PUNTA PRIMA**

- Sports Area in la residential development in Punta Prima -Sant Lluís, Menorca

### **POLIDEPORTIVO SON SERVERA**

- Sports Center in Son Servera, Mallorca

### **POLIDEPORTIVO NA CAPELLERA**

- Sports Center in Manacor, Mallorca



### **INSTITUTO NEFROLÓGICO, S.A. (NEPHROLOGY INSTITUTION)**

- Project and Work Direction.  
Dialysis Centers: Reus, Hospitalet del Llobregat, (3 Centers)

### **NEPHROCONTROL, S.A**

- Project and Work Direction.  
Dialysis Centers, Barcelona (4 Centers)

### **HOSPITAL DEL MAR.**

- Project and Work Direction.  
2 OR.

### **MUTUA MONTAÑESA, S.A.**

- Project and Work Direction.  
Health Care Center .Barcelona, (2 Centers)

### **INSTITUT BALEAR SALUD.**

- Project and Work Direction.  
Health Care Center .Son Servera (Mallorca)

### **GOVERN BALEAR**

- Project and Work Direction.  
Nursing Home for elderly people. Vilafranca (Mallorca)

### **HOSPITAL DE LA ESPERANZA**

- Project and Work Direction.  
Pathology Department and Operating Room (Barcelona)

### **SERVEI CATALÀ DE LA SALUT**

- Project and Work Direction.  
Health Care Center .Bellvitge (Barcelona)

#### **ASOCIACIÓN NUCLEAR ASCÓ – VANDELLÓS II, A.I.E.**

- Project and Work Direction.  
Descontamination Unit. Medical Center. ASCÓ (Tarragona)

#### **HOSPITAL UNIVERSITARI DE BELLVITGE**

- Project.  
Islet Laboratory, Bellvitge (Barcelona)

#### **SERVEI CATALÀ DE LA SALUT**

- Project.  
Reform 10<sup>th</sup> floor of Germans Trias i Pujol Hospital, Badalona (Barcelona)

#### **FRESENIUS MEDICAL CARE SERVICES CATALUNYA, S.L.**

Project and Work Direction:

- Dialysis Center Granollers, (Barcelona)
- Dialysis Center Rambla Marina, Hospitalet de Llobregat (Barcelona)
- Dialysis Center Terrassa, (Barcelona)
- Dialysis Center Consell de Cent, Barcelona
- Dialysis Center Hospital del Baix Llobregat, Barcelona

#### **GESTIÓ INTEGRAL DE CEMENTIRIS NOMBRE, S.L.**

- Project and Work Direction.  
Funeral Center in Sitges (Barcelona)

#### **TORRA, S.A.**

- Project and Work Direction.  
Crematorium in Sabadell (Barcelona)

### IBASAN

- Project and Work Direction.  
35 sewage treatment plants .Balears.

### SACEDE IBÉRICA

- Project and Work Direction.  
8 sewage treatment plants in Catalunya.

### ASOCIACIÓN NUCLEAR ASCÓ – VANDELLÓS II, A.I.E.

- Waste Recycling Program ASCÓ I and ASCÓ II Nuclear Power Plants, (Tarragona)  
Landfill 50.000 m<sup>3</sup>

### INSTITUTO BALEAR SANEJAMENT

- Draft Sludge and Cogeneration Treatment Project .4 Sewage treatment plantss, (Eivissa)
- Sludge Drying and Cogeneration Project .Water treatment plant (Santa Maria)

### ENDESA COGENERACIÓN Y RENOVABLES – ECYR

- Installation of Gas Analysis in Manure Drying Plant:
  - Torrente
  - Villanueva Gallego
  - Caspe
- Installation of pumping manure, Manure Drying Plant in Caspe.

### ZARPIMI, S.A.

- Wastewater use Project in EDAR Sa Rapita, to irrigate Golf “Sa Vinyola”.

### HNAS. SERVERA

- Wastewater use Project in EDAR to irrigate Golf Costa de los Pinos.

### GRUPO EMPRESAS ALONSO MARI.

- Wastewater use Project in EDAR San Luis to irrigate in I Punta Prima Hotel.

### FRANMURI, S.L.

- Wastewater use Project in several EDAR in coastal area to irrigate Golf “Club Mallorca”.

### JUAN SERVERA MUNAR

- Water Impulsion Project in Cala Romántica, Son Mon (Mallorca)

### PALMITOS PARK, S.L.

- Water Impulsion Project in Golf Cala Romántica in Mallorca.



### TEULERIA LES FORQUES

- Cogeneration Plant .800 kW. Almacelles, (Lleida)

### VALFORSA- TERMOTEC ENERGÍA, AIC

- Cogeneration Plant . 2000 kW

### INTERFLEXO

- Cogeneration Plant. 2004 KW. Pallejà, (Barcelona)

### ELECTRA CALDENSE

- Energy Generation 7200 kW

## POWER PLANTS –ASCÓ & VANDELLÓS (AUXILIARY EQUIPMENT)

### PRODENER (GRUPO ENDESA)

- Business License . Thermal Power Besós Parque Combustibles
- Project truck loading bay

### HYDROELECTRIC .ESPOT (GRUPO ENDESA)

- Reform Project of substation. Torrassa

### CENTRAL ESTERRI Y ROCA BLANCA (GRUPO ENDESA)

- Projects of Control and Power in cabins TR-2 . 25 Kv lines (Lleida)

### ASOCIACIÓN NUCLEAR ASCÓ – VANDELLÓS II

- Project of adequacy Special Waste Landfill C.N. I & II
- sludge dehydration plant
- Construction of the Central Building. 2000 m2. C.N. Vandellòs II
- Decontamination Unit. Medical Center C.N. Ascó I & II
- Warehouse Installation of Reverse Osmosis in C.N. Vandellòs II
- Data Acquisition Program Post tensioning. Containment Building
- Remodeling Access and Control Systems
- Adequacy Warehouse Gas and Chemicals to Regulations ITC – MIE APQ 005 Y APQ 001
- Project of Storage Tank and Water Raft of Tritium. 10.000 m2

### Urbanism:

- Modification PGOU and creation of industrial park PPI-3. 225.000m2. C.N. Vandellòs II
- Modification PGOU and creation of industrial park PPI-1 230.000m2. C.N. Vandellòs II
- Modification PGOU and creation urban improvement plan PMU 35.000m2. C.N. Vandellòs II
- Environmental Impact Studies. C.N. Ascó I andy II
- Development Project of the EI Industrial Park
- Draft Plan C.N. Vandellós II

### Environment:

- Study of Zebra mussel evolution from larva to adult stage. Ebro River.
- Study of Zebra Mussel Colonization. Ebro River.
- Analysis of 33 water parameters of the River in Collection and Disposal area in Nuclear Power Plant
- Study of river temperature in the landfill area. Ebro River.
- Study populations Macrophytes in water intake. Río Ebro River.
- Analysis of Leachate in Landfill Controlled. C.N. Ascó.
- Characterization Study of Seacoast - Land C.N. Vandellós II



Corral Serra

### SOLAR PHOTOVOLTAIC

BINISEFÚLLER	1267,50 Kw
BINIBEQUER	1462,50 Kw
L'ANZELL	1462,50 Kw
VILAFRANCA BONANY	1159,20 Kw
SON CARTET	1950,00 Kw
SES QUARTARADES	804,96 Kw
FOTOVOLTAICA LEÓN	966,00 Kw
FOTOVOLTAICA SON DURI	1159,20 Kw
SON OMS	78,00 Kw
LLUCMAJOR	700,00 Kw

CORRAL SERRA	1393,00 Kw
SON PARERA	2499,00 Kw
SA BOLEDA	630,00 Kw
C.S. GOMILA	90,00 Kw
MULA	10.000 Kw (Previous phase)

## SOLAR THERMAL

	M <sup>2</sup> THERMAL PLATES
ROBINSON CALA SERENA	503 m <sup>2</sup>
HOTEL CONSTANZA	183 m <sup>2</sup>
PROMOCIÓN DE VIVIENDAS CASTELLARNAU FASE II	132 m <sup>2</sup>
HOTEL FORMENTERA PLAYA	231 m <sup>2</sup>
HOTEL PUNTA PRIMA	181 m <sup>2</sup>
INSOTEL CALA RATJADA	179 m <sup>2</sup>
PROMOCIÓN DE VIVIENDAS FINESTRELLES	138 m <sup>2</sup>
CLUB ESQUINZO PLAYA GRUPO ROBINSON	653 m <sup>2</sup>
PROMOCIÓN DE VIVIENDAS CASTELLARNAU FASE III	199 m <sup>2</sup>
HOTEL SON ANTEM MARRIOT	137 m <sup>2</sup>
PROMOCIÓN DE VIVIENDAS CASTELLARNAU FASE IV	137 m <sup>2</sup>
PROMOCIÓN DE VIVIENDAS BENICARLÓ	573 m <sup>2</sup>
PROMOCIÓN DE VIVENDAS RAMBLA MARINA	419 m <sup>2</sup>
OFICINAS CITY METROPOLITANA	212 m <sup>2</sup>



### FORMIGONS '92

- Molins De Rey
- Sant Boi
- Castelldefels
- Port Barcelona
- Can Dragó - Barcelona
- Ciutat De La Justicia
- Metro Línia 9 – Horta
- Mas Blau
- Viladecavalls
- Sant Quirze del Vallès

### LANDINI IBÉRICA

- Project and Work Direction .Business License

### NÁUTICA CASAS

- Project and Work Direction.  
2500 m<sup>2</sup>  
Platja d'Aro – Girona.

### CONSORCIO ZONA FRANCA

- Installations and License

### FABRIGAS (Grupo ROCA)

- Extension 2400 m<sup>2</sup>– Castellbisbal, (Barcelona).

### B.F.I.

- Project of construction and installations

### GONVARRI

- Building for offices and industrial buildings with a total of 33.951,36 m<sup>2</sup>.

## **MONDI PACKAGING IBÉRICA**

Barcelona

## **M. RIUS 1839, S.A**

- Project and Work Direction.  
Extension 1.900 m<sup>2</sup> .Parets del Vallès, (Barcelona).

## **PRIME STEEL S.A.**

- Project and Work Direction.  
7.100 m<sup>2</sup> .Tarragona.

## **PANRICO S.A.**

- Dedicated to warehouse and distribution center .Fornells de la Selva, (Girona).

## **POLARIER STAR S.L.**

- Project and Work Direction  
dedicated to Laundry Room . Anglada, (Palma de Mallorca).

## **NUTREXPA S.L.**

- Project and Work Direction . Parets del Vallès, (Barcelona).